



REGAL  
KOWLOON HOTEL  
TSIMSHATSUI • HONG KONG





## Location

Perfectly located in the midst of downtown Tsimshatsui - Hong Kong's renowned commercial, touring and shopping district, Regal Kowloon Hotel provides the ideal environment for both business and leisure travellers and is easily accessible by major transportation systems in Hong Kong. It just takes 40 minutes (35km) drive from the Hong Kong International Airport.

Regal Kowloon Hotel is very close to some of the popular tourist attractions of Hong Kong, e.g. Avenue of Stars, Star Ferry, DFS Galleria, Nathan Road, etc. The convenient location of the hotel makes your sight-seeing and shopping itineraries with ease.

## Accommodation

The hotel features 600 beautifully appointed guestrooms including 39 suites with a look of modern grace and elegance. Guestrooms are fully appointed with the latest amenities for comfort and efficiency. Business travellers can enjoy deluxe services and accommodations on the Executive Club floors as well as the superb facilities and exclusive privileges at our spacious Club Lounge.



## Restaurants & Bar

Embark on a culinary tour around the world at our chic and stylish restaurants which feature diverse choices ranging from Western specialities to classical Chinese cuisine, refreshing cocktails to sumptuous international buffets.

- Mezzo – American Italian cuisine
- Regal Court – Traditional Cantonese with a touch of Sichuan
- Café Allegro – Theme buffets and international delights
- V bar & lounge – Snacks and cocktails
- Regal Patisserie – Cakes, pastries and savouries

## Meeting & Event Facilities

For all your meeting needs, the hotel provides 14 wonderfully designed function rooms including the contemporary Versailles Ballroom that can comfortably accommodate functions of up to 400 guests. Each multi-function room is well-equipped with the latest high-tech facilities to ensure that your conference or social gathering is a success.

### State-of-the-art Equipment

- TV/VCD/DVD player
- LCD projector
- Audio and video control system
- Wireless microphone
- Internet access (wired or wireless)



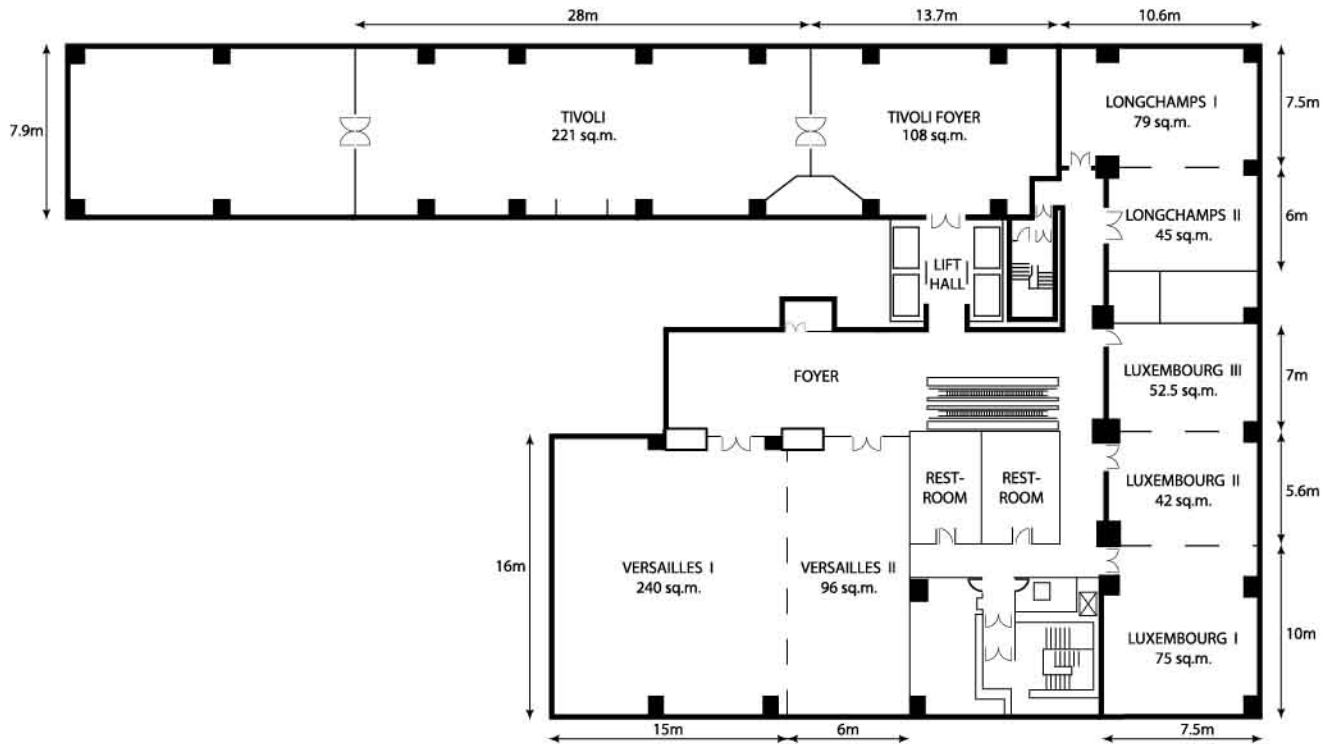
MEETING



CONFERENCE

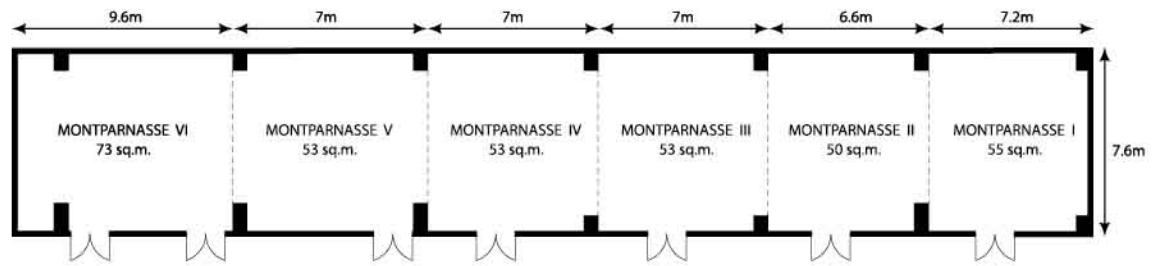
## Meeting Rooms Capacity Charts & Floor Plans

### Ballroom and Function Rooms (3/F)



Venues	Dimension (Width x Length) (m)	Area (sq.m)	Ceiling Height (m)	Theatre (persons)	Classroom (persons)	U-Shape (persons)	Banquet (persons)	Cocktail Reception (persons)
Versailles I	16 x 15	240	2.5 - 2.8	240	120	45	228	300
Versailles II	16 x 6	96	2.5 - 2.8	80	40	36	96	100
Versailles I-II	16 x 21	336	2.5 - 2.8	360	200	65	360	400
Luxembourg I	10 x 7.5	75	2.2	60	18	21	36	40
Luxembourg II	5.6 x 7.5	42	2.2	40	18	10	24	30
Luxembourg III	7 x 7.5	52.5	2.2	40	18	10	24	30
Luxembourg I-III	22.6 x 7.5	169.5	2.2	180	72	50	120	120
Longchamps I	7.5 x 10.6	79	2.3	50	24	18	36	40
Longchamps II	6 x 7.5	45	2.3	40	18	10	24	20
Longchamps I-II	13.5 x 10.6	124	2.3	80	45	31	60	60
Tivoli	7.9 x 28	221	2.1 - 2.2	130	50	34	144	120

## Montparnasse Rooms (2/F)



Venues	Dimension (Width x Length) (m)	Area (sq.m)	Ceiling Height (m)	Theatre (persons)	Classroom (persons)	U-Shape (persons)	Banquet (persons)	Cocktail Reception (persons)
Montparnasse I	7.6 x 7.2	55	2.2 - 2.4	40	18	18	24	20
Montparnasse II	7.6 x 6.6	50	2.2 - 2.4	40	18	18	24	20
Montparnasse III	7.6 x 7	53	2.2 - 2.4	40	18	18	24	20
Montparnasse IV	7.6 x 7	53	2.2 - 2.4	40	18	18	24	20
Montparnasse V	7.6 x 7	53	2.2 - 2.4	40	18	18	24	20
Montparnasse VI	7.6 x 9.6	73	2.2 - 2.4	60	24	24	36	30
Montparnasse I-VI	7.6 x 44.4	337	2.2 - 2.4	280	144	-	240	280